

Soap Plant



Allbest Creative Development Ltd. (ALLBEST)

Preface

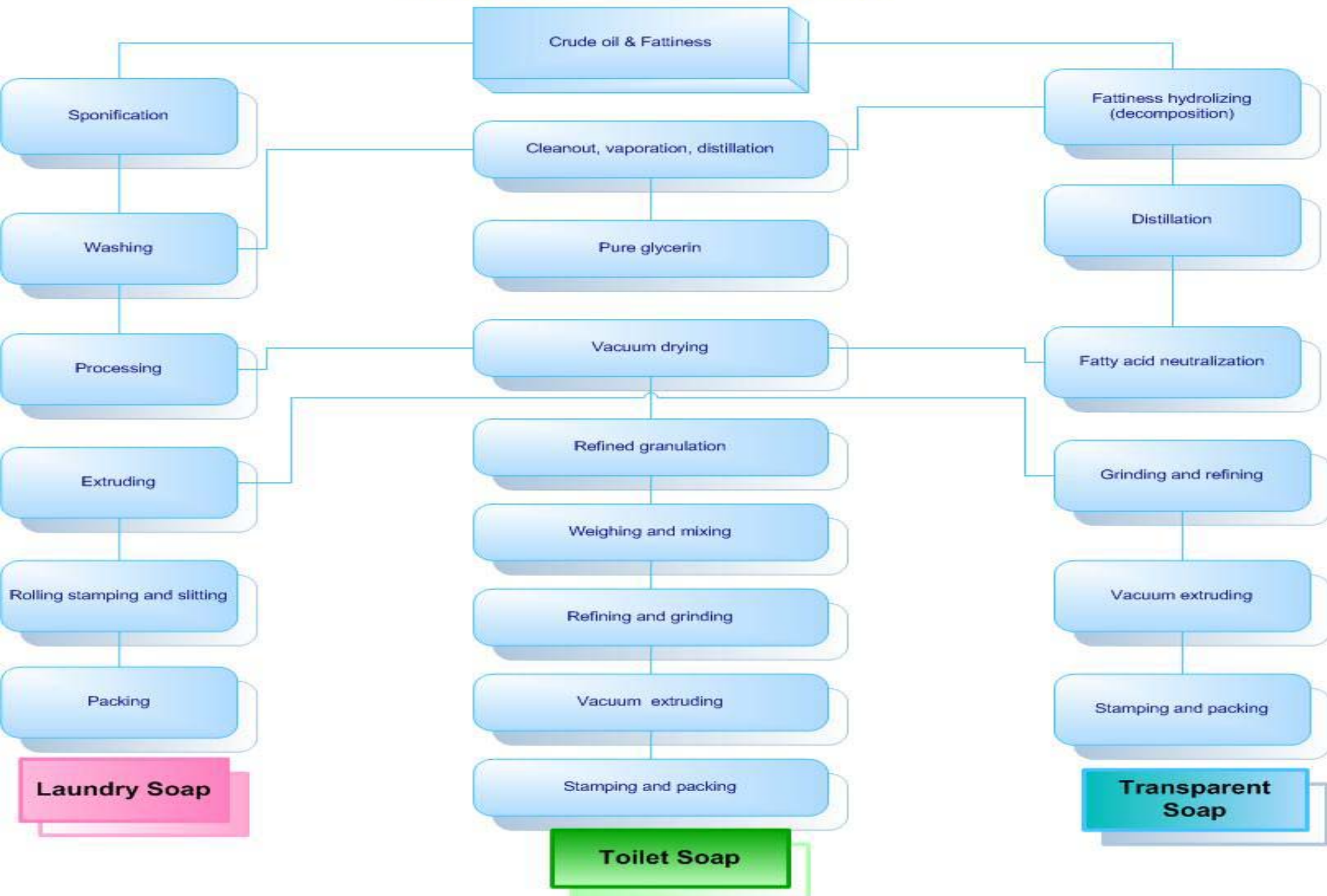
With our effort in this industry for many years and absorbing the international advanced technology, we manufactured and developed the complete set of equipment in series for soap making industry.

We offer 1,000 -6,000 Kg/H soap plant with the process of continuous saponification, refining, graduating, vacuum dry, air transport, soap flake collections, fine grinding, forming and printing, etc.

1000 Kg/H Toilet Soap Molding Section

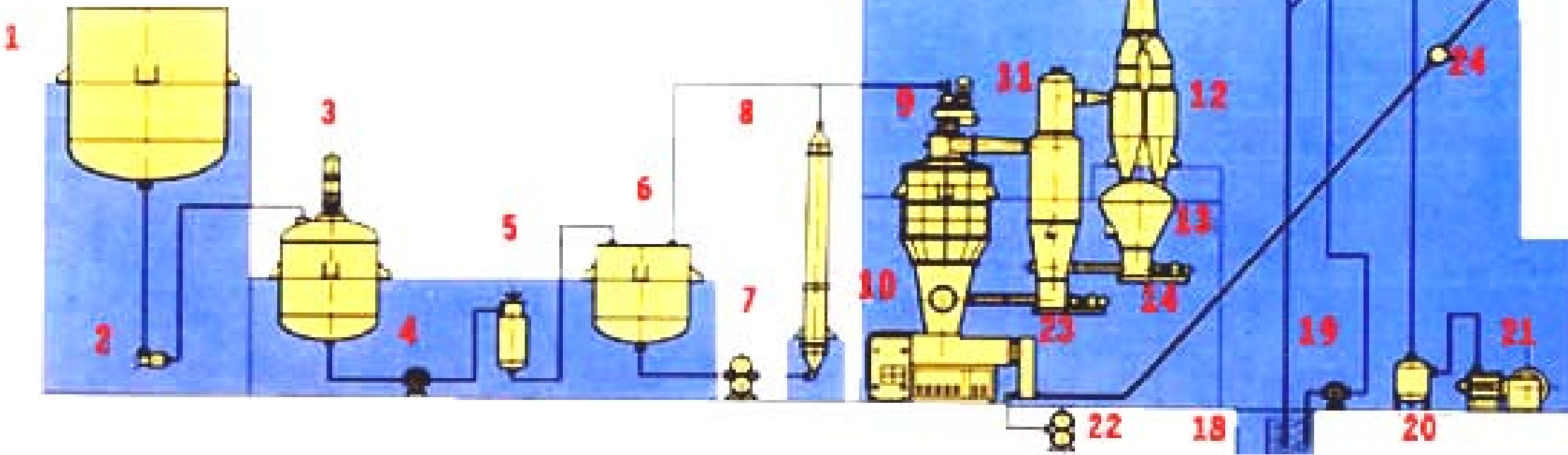


Typical process of soap making

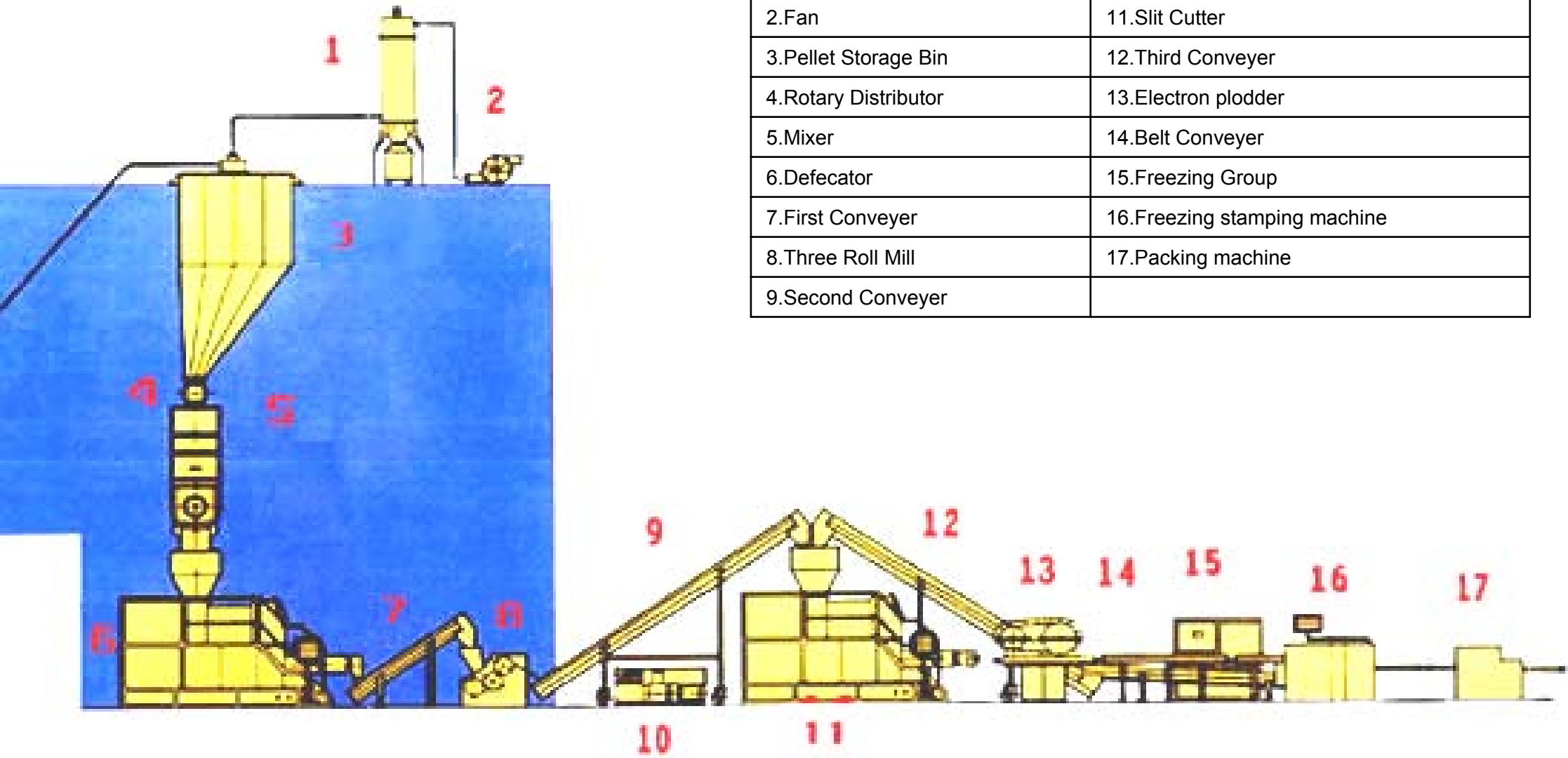


1. Soap-radical Container	13. Fine Power Conveyor
2. Filter	14. Fine Power Conveyor
3. Blending tank	15. Vacuum Booster
4. Filter Pump	16. Barometric Condenser
5. Filter	17. Mist Eliminator
6. Soap inlet Container	18. Hot Well
7. Gear Pump	19. Water Circulating Pump
8. Heat Exchanger	20. Foam Eliminator
9. Vacuum Spray Dryer	21. Vacuum Pump
10. Grain Machine	22. Air Blower
11. First Fine Separators	23. Soap Machine by Air
12. Second Fine Separators	24. Piston-type Pipeline Turnout

Vacuum dry process



Molding and Stamping Process



1.Bag Filter	10.Water Chillers
2.Fan	11.Slit Cutter
3.Pellet Storage Bin	12.Third Conveyer
4.Rotary Distributor	13.Electron plodder
5.Mixer	14.Belt Conveyer
6.Defecator	15.Freezing Group
7.First Conveyer	16.Freezing stamping machine
8.Three Roll Mill	17.Packing machine
9.Second Conveyer	

Automatic Multi-purpose Chill Stamping Machine



Major Characteristic

1. Collect electronic-controlled, mechanical, vacuum, freeze, lubricate and mould in one body and program control.
2. Cam manipulator automatic send and unload soap. Moulage to-and-fro 90degree stamp. Soap precision nigh and safety.
3. International brand industrial control product Integration and stamp performance start world advanced level.

Capacity: 2000Kg/h

Stamp Speed: 1-60times/min

Dies Stroke: 85mm

Stamp weight: 600g

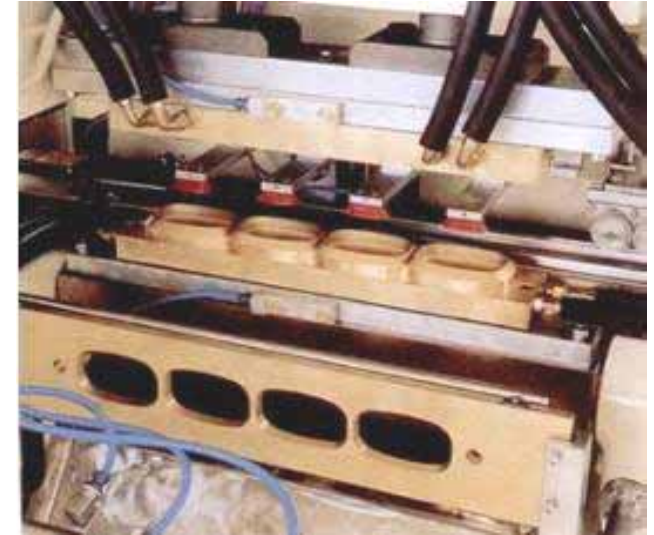
Working Speed: 60r.p.m

Motor power: 7kw

Dies Temperature: -17℃—21℃



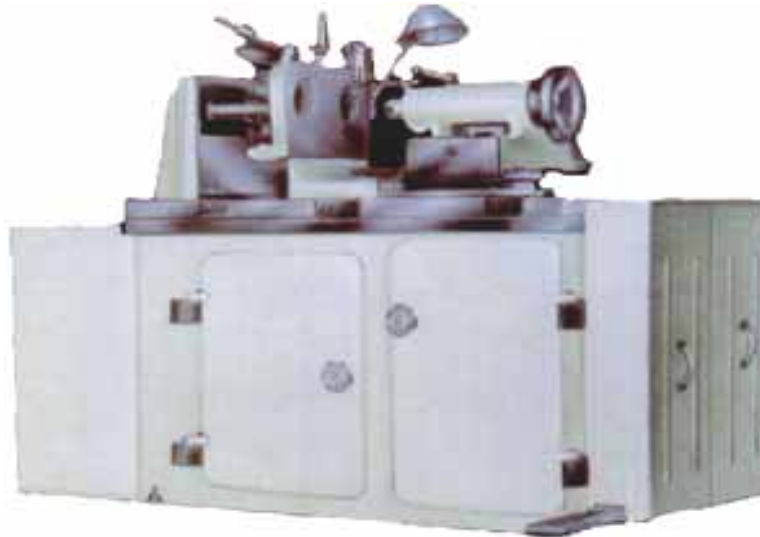
Electric Control System



Mold



Toilet Soap Stamping Machine



Major Characteristic

This machine is an improvement of model XD01 soap stamping machine, using crank and link mechanism replaced cam mechanism, thus, avoiding vibration and noise, greatly improved the productivity and service life, It can be a matching equipment of XT-500 Forming Machine to complete soap cubing, molding and stamping.

Type: Electro-magnetic speed regulating Whole-Length stamping linear reciprocating

Productivity: 80-120pcs/min

Soap weight: 50-160g/pcs

Piston Stroke: 124mm

Travel of the moving table: 115mm

Motor: YCT-160-4B, 3kw 115-1150rpm

Dimensions (L×W×H) : 3560×1410×1135(mm)

Net Weight: 1750kg

Multi-purpose kneading Machine

Mill Dia: 880mm

Mill Speed: 35r.p.m

Mill Composition: single axes

Motor Power: 15kw



Mill Dia: 880mm

Mill Speed: 35r.p.m

Mill Composition: double axes

Motor Power: 7.5kw+7.5kw



Toilet Soap Mixer



Major Usage

Used to mill the toilet soap material

Output:90kg/one time

Capacity:750L

Main power:7.5kw 1400p/min 380V 15.4A

Reduction gear model:JZQ350 Speed
rate:1:20.49

Out material way: push rod power,

Power of out material door:120kw

1400p/min 380V 0.48A

Dimensions (L×W×H):2500×1500×1200



Single Multi-purpose Defecator



Output: 1200-2000kg/h
Dia. of worm Screw: 300mm
Working Speed: 6-18r.p.m
Motor power: 30kw



Multi-purpose Duple Defecator



Output: 1200-2000kg/h
Dia. of worm Screw: 300mm
Working Speed: 6-18r.p.m
Motor power: 30kw+30kw

Major Characteristic

Pestle and refine finished once time, Soap finely and smoothly incomparable, 2nd grade refined soap have eliminated sand sense thoroughly, Essence will not volatilize and pellet will not outside to rush down. The welding of stainless steel screw rod that developed recently strength is high. The effective compressed length-way rate of screw rod reach fourfold. With whole mill the hard deceleration machine of tooth flank for special purpose, Stepless speed regulation of frequency conversion, Control freely and save energy remarkable.

Duplex Multi-purpose vacuum Slit Cutter



Output: 1200-2000kg/h

Dia. Of worm Screw: 300mm

1st Screw Speed : 18r.p.m

2nd Screw Speed: 0-18r.p.m

Motor power: 22kw+22kw+1.5kw

Major Characteristic

The welding of stainless steel screw rod that developed recently strength is high

The effective compressed length-way rate of screw rod reach fourfold.

With whole mill the hard deceleration machine of tooth flank for special purpose

Stepless speed regulation of frequency conversion, control freely and save energy remarkable

Produce manifold toilet soap and translucent soap of fatty acid.

Multi-purpose Grain Machine



Major Characteristic

The welding of stainless steel screw rod that developed recently strength is high. The effective Compressed length way rate of screw rod reach fourfold.

With whole mill the hard deceleration machine of tooth flank for special purpose.

The advanced circulating structure of coling water.

Output: 2000-3000kg/h

Screw dia: 300mm

Working Speed: 18r.p.m

Motor Power: 30kw

Pellet Outlet Machine Made by Board with Inside Outside Holes



Pellet Outlet Machine Made by Board with inside Outside Holes

Multi-purpose electron plodder



Major Characteristic

Adopt revolving encoder online detection and cut speed synchronous with the machine all along.

Can set cut length wantonly through touch screen. Cam servocontrol and cut surface levelly and smoothly.

International brand industrial control product integration and have outstanding quality.

Cut Speed: 300times/min

Cut Scale: 50-999MM

Cut Thickness: 5-70MM

Motor Power: 3.5kw

Three Roller Mill



Major Characteristic

The high hardness roller surfaces of stainless steel that developed recently and never rust-eaten.

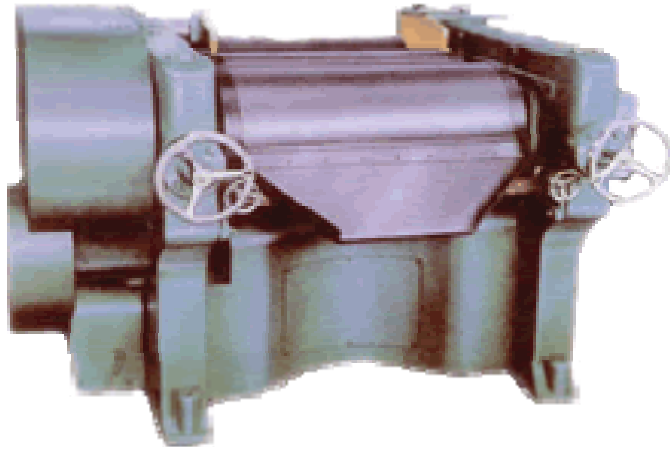
Vertical structure and extended roller surface and output is larger.

Roller Canister Dia: 405mm

Roller Canister Length: 1200mm

Motor Power: 15kw

Toilet Soap Three-Roll Grinders



Major Characteristic

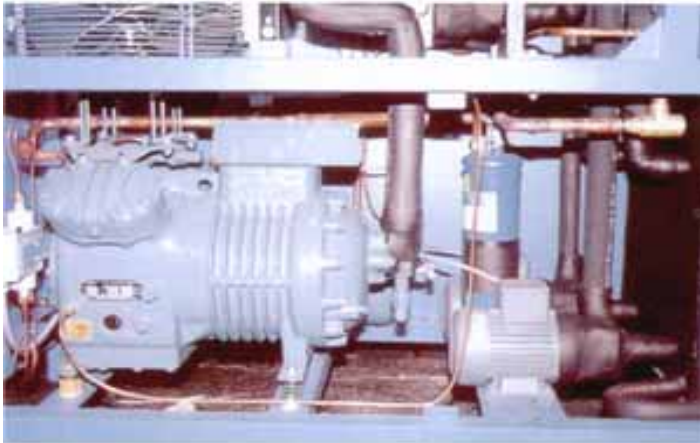
The machine is mainly used for mixing and grinding soap granule with normal temperature and moisture by running three rollers on horizontal to squeeze and grind soap particles. Generally three times grinding can get 3-18 μ m soap particles.

Type		S260	S405
Diameter of roller (mm)		ϕ 260	ϕ 405
length of roller (mm)		695	810
roller Speed rom	Slow Roller	19.1	12.2
	Middle Roller	60	40
	Rapid Roller	155	116
Roller	Type	Y160L-6	Y180L-6
	kw	7.5	15.8
	rpm	970	970
Roller Speed Ratio		1:3:9	1:3:9
Dimension LWH		1500×1200×1000	2400×1730×1200
Net weight (kg)		2368	5218

Freezer



Freezer Power: 7.5Kw
Refrigerate Capacity: 1000Kcal/h
Refrigerate Temperature: -30°C



Refrigeration Compressor

Belt conveyer

Major Usage

Used to transport the material

Width of the belt (mm): 170-1100

Length of the belt (meter) : 2-40

Transport capacity (meter³/hour) : 2-100

Motor power (kilowatt) : 0.75-13

Speed (mill/min) : 10-40



Screw conveyer

Used to transport the material.

Screw diameter: 100-1000

Pitch(mm) : 100-500

Turn speed (turn/min) : 100-20

Transport capacity (m³/h) : 2-200

Motor power (kilowatt) : 0.75-16

Length (m) : 1.5-60



Multi-purpose vacuum spray dryer

Major Characteristic

The reinforced types of fully stainless steel organize to weld structure. Wearproof acid-resisting. Alkaline resisting and high temperature resisting.

Adopt vertical gear reducer casing and put the type automatic lubrication of oil pump.

The spray nozzle for special purpose of various properties and can produce the soap of quantity of various fatty acid.

Out put: 2000-3000kg/h

Chief Axle Speed: 13r.p.m

Cylinder Dia: 1500mm

Motor Power: 5.5kw



Chief Axle, Nozzle, Scraper in Part of Upper, Middle & Lower

Gear Reducer Transmission

Double Association

Output: 1000-2000kg/h
2000-3000kg/h
Single Soap powder Separator
Fine power conveyer



Single Soap powder Separator



Quadruplicate Association



Output: 1000-2000kg/h
2000-4000kg/h

Quadruplicate Soap power Separator



Soap World

Flakes and Curds



Toilet Soap



Laundry Soap



Transparent Soap



Service

- **Advanced and reliable technology & engineering**
- **Procurement, manufacture, and delivery of the goods**
- **Project management**
- **Construction, installation, and commissioning**
- **Technical service**
- **Training program**
- **Service after completion of the project**
- **Financing assistance and export credit**
- **Other services and functions upon request**

CREATE THE FUTURE



Allbest Creative Development Ltd. (ALLBEST)

Beijing, China

allbest@china.com